

Daily Summary for Amman Stock Exchange

VALUE TRADED (JD)

	2025	2026	NET CHANGE	CHANGE (%)
Daily	9,348,032	13,237,831	3,889,799	41.61%
Cumulative (1/6-8/6)	54,607,375	108,016,409	53,409,034	97.81%
Cumulative (4/1-8/6)	742,123,291	1,386,675,470	644,552,179	86.85%

NO. OF SHARES TRADED

	2025	2026	NET CHANGE	CHANGE (%)
Daily	2,958,868	4,110,638	1,151,770	38.93%
Cumulative (1/6-8/6)	20,656,597	33,658,228	13,001,631	62.94%
Cumulative (4/1-8/6)	380,189,932	479,276,308	99,086,376	26.06%

NO. OF TRANSACTIONS

	2025	2026	NET CHANGE	CHANGE (%)
Daily	2,742	4,289	1,547	56.42%
Cumulative (1/6-8/6)	17,478	30,106	12,628	72.25%
Cumulative (4/1-8/6)	246,077	389,089	143,012	58.12%

SOME FINANCIAL RATIOS FOR THE ASE (8/6/2026)

SECTOR	P/E	P/BV	DIVIDEND YIELD (%)	TURNOVER (%)
FINANCIAL	9.830	1.007	4.851	0.053
SERVICES	13.364	1.520	4.693	0.057
INDUSTRY	16.047	2.859	4.856	0.111
OVERALL	12.050	1.526	4.963	0.063

ASE GENERAL FREE FLOAT WEIGHTED INDEX ASEGI (1999=1000)

	SUNDAY 07/06/2026	MONDAY 08/06/2026	% CHANGE	
			DAY BEFORE	YTD
GENERAL INDEX ASEGI	4007.1	3991.4	-0.39%	10.52%
FINANCIAL	3881.4	3864.5	-0.44%	2.36%
SERVICES	2697.5	2708.2	0.40%	24.67%
INDUSTRY	10441.3	10313.5	-1.22%	16.24%

ASE FREE FLOAT WEIGHTED INDEX ASE20 (2014=1000)

	2190.6	2182.7	-0.36%	10.31%
--	--------	--------	--------	--------

TOTAL RETURN INDEX ASETR (2021=1074)

	3030.9	3019.8	-0.36%	16.05%
--	--------	--------	--------	--------

ASE WEIGHTED INDEX (1991=1000)

	SUNDAY 07/06/2026	MONDAY 08/06/2026	% CHANGE	
			DAY BEFORE	YTD
GENERAL	7998.2	7915.1	-1.04%	12.18%
BANKS	10085.7	9988.3	-0.97%	5.77%
INSURANCE	1944.7	1928.8	-0.82%	8.16%
SERVICES	1155.0	1156.3	0.11%	6.30%
INDUSTRY	13830.4	13649.4	-1.31%	19.70%

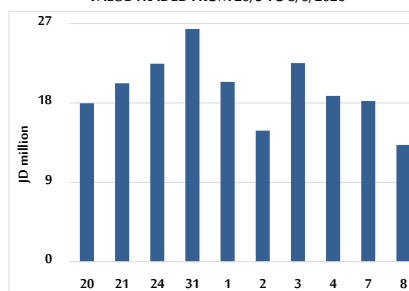
MARKET INDICES WEIGHTED BY FREE FLOAT MARKET CAP. (2012=1000)

	SUNDAY 07/06/2026	MONDAY 08/06/2026	% CHANGE	
			DAY BEFORE	YTD
FIRST MARKET	2265.4	2256.4	-0.40%	10.62%
SECOND MARKET	1036.0	1033.7	-0.23%	1.10%

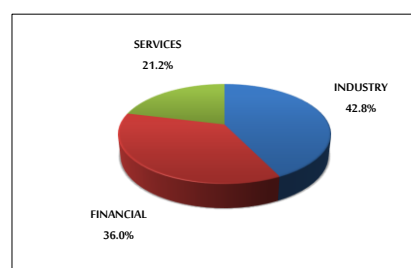
MARKET CAPITALIZATION (JD)

	29,691,036,272	29,397,069,105	-0.99%	10.96%
--	----------------	----------------	--------	--------

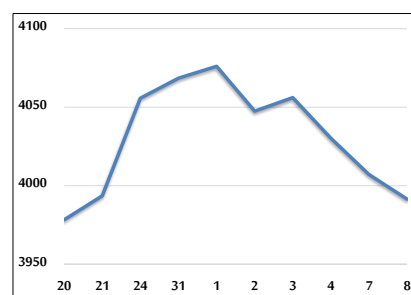
VALUE TRADED FROM 20/5 TO 8/6/2026



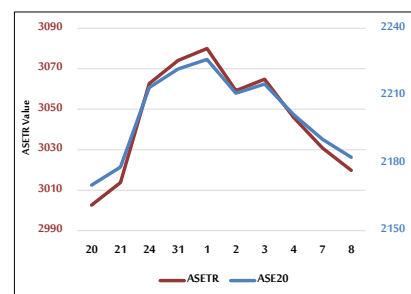
VALUE TRADED BY SECTOR MONDAY 8/6/2026



ASE GENERAL FREE FLOAT WEIGHTED INDEX 20/5 TO 8/6/2026



ASE20 INDEX & ASETR INDEX FROM 20/5 TO 8/6/2026



ASE WEIGHTED INDEX FROM 20/5 TO 8/6/2026

