

Daily Summary for Amman Stock Exchange

VALUE TRADED (JD)

	2021	2022	NET CHANGE	CHANGE (%)
Daily	6,519,602	5,912,618	-606,984	-9.31%
Cumulative (2/1-11/1)	72,578,914	45,594,761	-26,984,153	-37.18%
Cumulative (2/1-11/1)	72,578,914	45,594,761	-26,984,153	-37.18%

NO. OF SHARES TRADED

	2021	2022	NET CHANGE	CHANGE (%)
Daily	7,501,031	4,296,880	-3,204,151	-42.72%
Cumulative (2/1-11/1)	97,647,118	33,788,590	-63,858,528	-65.40%
Cumulative (2/1-11/1)	97,647,118	33,788,590	-63,858,528	-65.40%

NO. OF TRANSACTIONS

	2021	2022	NET CHANGE	CHANGE (%)
Daily	3,007	3,566	559	18.59%
Cumulative (2/1-11/1)	25,400	23,255	-2,145	-8.44%
Cumulative (2/1-11/1)	25,400	23,255	-2,145	-8.44%

SOME FINANCIAL RATIOS FOR THE ASE (11/1/2022)

SECTOR	P/E	P/BV	DIVIDEND YIELD (%)	TURNOVER (%)
FINANCIAL	36.037	0.894	3.179	0.058
SERVICES	-	1.284	2.228	0.096
INDUSTRY	28.330	2.123	2.644	0.082
OVERALL	37.870	1.139	2.892	0.069

STOCK PRICE INDEX WEIGHTED BY FREE FLOAT MARKET CAPITALIZATION (1999=1000)

	MONDAY 10/01/2022	TUESDAY 11/01/2022	% CHANGE	
			DAY BEFORE	YTD
GENERAL	2168.4	2175.8	0.34%	2.70%
FINANCIAL	2686.1	2695.3	0.34%	3.49%
SERVICES	1341.9	1350.2	0.62%	1.71%
INDUSTRY	3677.4	3672.1	-0.15%	0.17%

STOCK PRICE INDEX WEIGHTED BY FREE FLOAT MARKET CAPITALIZATION ASE20 (2014=1000)

	1107.4	1111.0	0.33%	3.41%
--	--------	--------	-------	-------

STOCK PRICE INDEX WEIGHTED BY MARKET CAPITALIZATION (1991=1000)

	MONDAY 10/01/2022	TUESDAY 11/01/2022	% CHANGE	
			DAY BEFORE	YTD
GENERAL	4091.7	4099.2	0.18%	2.35%
BANKS	6776.5	6819.2	0.63%	3.85%
INSURANCE	1375.1	1381.3	0.45%	3.98%
SERVICES	794.7	792.3	-0.29%	1.27%
INDUSTRY	4729.9	4715.0	-0.32%	0.31%

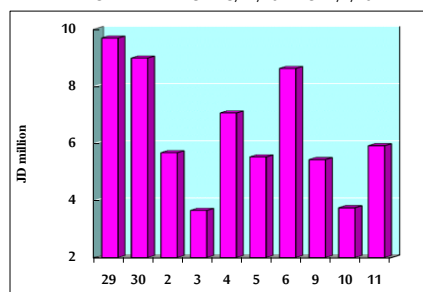
STOCK PRICE MARKET INDEX WEIGHTED BY FREE FLOAT MARKET CAP. (2012=1000)

	MONDAY 10/01/2022	TUESDAY 11/01/2022	% CHANGE	
			DAY BEFORE	YTD
FIRST MARKET	1177.0	1181.2	0.35%	3.17%
SECOND MARKET	935.6	935.5	-0.01%	-0.12%

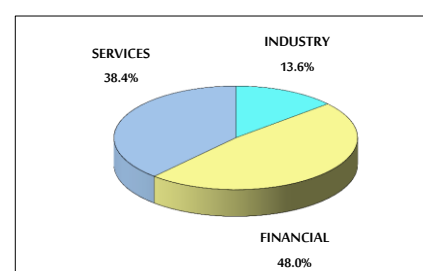
MARKET CAPITALIZATION (JD)

	15,780,205,599	15,806,128,100	0.16%	2.00%
--	----------------	----------------	-------	-------

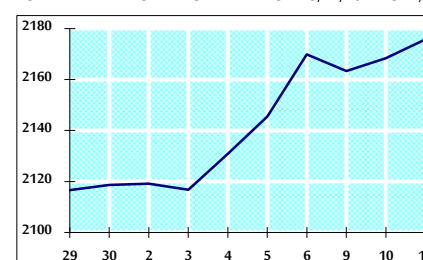
VALUE TRADED FROM 29/12/2021 TO 11/1/2022



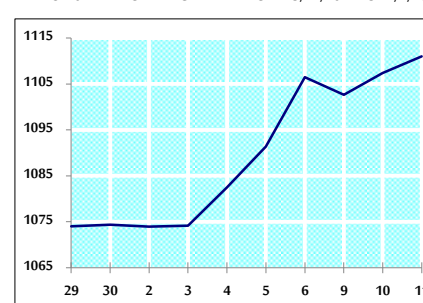
VALUE TRADED BY SECTOR TUESDAY 11/1/2022



GENERAL FREE FLOAT PRICE INDEX FROM 29/12/2021 TO 11/1/2022



ASE20 FREE FLOAT PRICE INDEX FROM 29/12/2021 TO 11/1/2022



GENERAL PRICE INDEX FROM 29/12/2021 TO 11/1/2022

